

# MOLDED PLATINUM TEMPERATURE SENSOR MODEL MPT

## FEATURES

- Lowcost
- Water-tight
- construction
- Easy to use flexible design
- Temperature range: -50~105°C
- Employs standard Pt 100 or Pt 1000 DIN platinum resistance temperature elements
- Direct temperature measurement without need of any further assembly



## DESCRIPTION:

MPT temperature sensor is made up of Pt 100W or Pt-1000W platinum resistance temperature detector and connection cable molded together in thermoplastic rubber insulation. The sensor can be used for direct temperature measurement in air or liquids. The connection cable can be connected to a temperature indicator for display of temperature. MPT sensor features small size, flexible vibration-proof design and completely waterproof construction. The sensor is available in either 2-wire or 4-wire designs with standard one meter long connecting cable. Extra cable is available upon request from customers. Optional stainless steel enclosures are available to protect the probe tip.

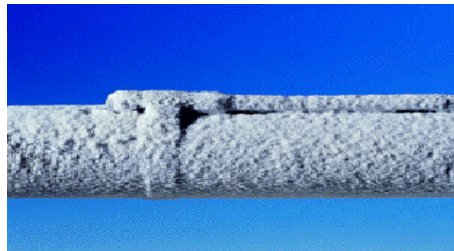
## APPLICATIONS:

MPT has numerous applications in various types of industries for contact type or immersion temperature measurement in air or liquids within the range of -50 to 105°C. It can be used in chemical industries for continuous immersion in corrosive liquids e.g., electrolytic processes and for temperature measurement of hot or frosted pipe-lines. It is hygienic for temperature measurement in food industry as it does not contaminate food products.

It also finds applications for temperature measurement in automobile or other vibrating machinery. It can also be used as a sub-assembly for low temperature resistance temperature detector assemblies.



**Direct temperature  
Measurement of hot liquids**



**Temperature measurement  
of frosted pipe-lines**

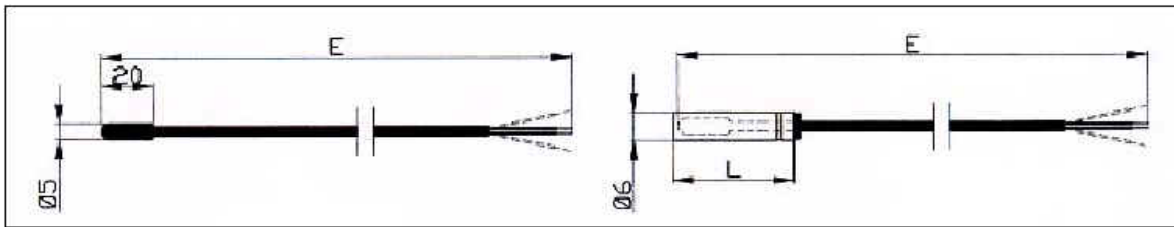


**Long time dipping in  
corrosive liquids**

TECHNICAL SPECIFICATIONS:

Sensing element	Single RTD, 1 Pt 100 $\Omega$ at 0°C or 1 Pt 1000 $\Omega$ at 0°C as per IEC 751 class B or class A* (* class A available only for Pt 100 probes with 4-wire circuit)
Type of construction	Sensor and extension cable molded together as one hot vulcanized unit
Temperature range	-50 ~ 105°C
Cable data	2 or 4 stranded copper wires 0.35 mm <sup>2</sup> (22 AWG), each conductor polypropylene insulated, overall thermoplastic elastomer insulation, outer diameter - 3.5mm
Insulation resistance	100M $\Omega$ with 100 Vd.c.
Optional stainless steel case	SS 316 case (50 mm length X 6mm OD or 100mm length X 6mm OD) is available for protection of the sensor tip
Markings	Markings of accuracy report, manufacturing date and tractability (available only for probes with SS case)

DIMENSIONS:



**TOSHNIWAL SENSING DEVICES PVT. LTD.**

E-19/20, INDUSTRIAL ESTATE MAKHUPURA , AJMER-305002, INDIA

TEL: +91-145-2695482 , FAX: +91-145-2695006

CUSTOMER CARE: +91-9571897879

E-MAIL: sales@tsdpl.com, WEBSITE: www.tsdpl.com